

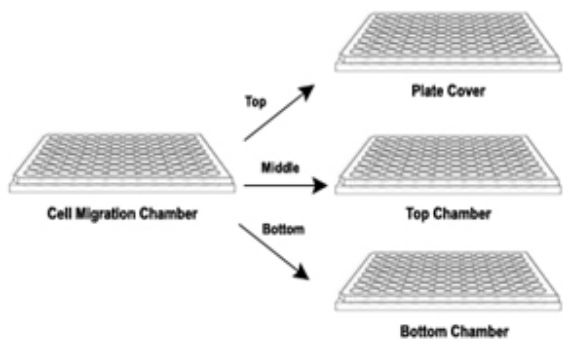
Cell Migration & Invasion Assay Kits

BioVision offers Easy-to-Use Cell migration/Chemotaxis and Invasion Assay kits that are adaptable to HTP systems. These assays utilize a Boyden Chamber. Cells migrate through a semi-permeable membrane (Cell Migration Assays) and invade the matrix, and then migrate through a semi-permeable membrane (Cell Invasion Assays) in response to stimulatory or inhibitory compounds. Cell Migration/Invasion can be analyzed directly by reading fluorescence in a plate reader.

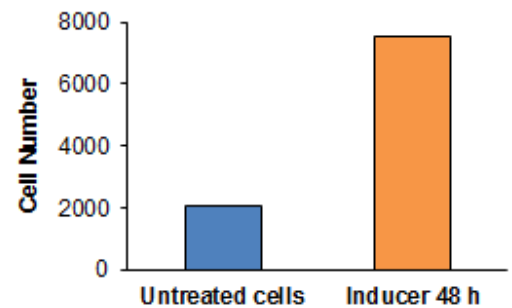
Key Features:

- **Non-radioactive**, homogeneous assays
- **Sensitive, High Throughput Screening compatible**
- **Fluorometric detection** (Ex/Em= 530/590 nm)
- **Convenient:** simple, fast protocols (1-2 hours)
- **Cost effective:** 12/100 assays;
- **Validated:** using mammalian invasive cell lines

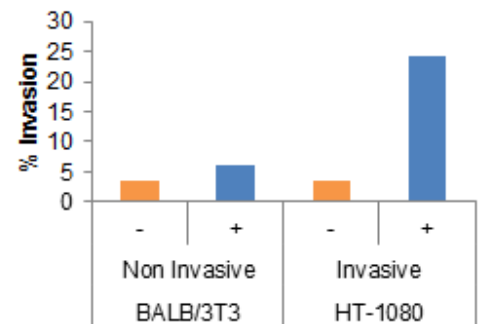
A)



B)



C)



A) Cell Migration/Invasion plates: The cells are added to the Top Chamber and the Control Migration/Invasion Inducer or chemoattractant are added to the Bottom Chamber. **B) Cell Migration (3 μ m-pore) using K908:** Erythroleukemia cells were starved overnight and treated with Control Migration Inducer for 48 h or left untreated (control cells). Treatment with Control Migration Inducer demonstrated a significant increase in migration as compared to untreated cells. **C) Cell Invasion (8 μ m-pore, Collagen I coating) using K916:** NIH-3T3 and HT-1080 cells were starved overnight and treated with Control (Cnt) Invasion Inducer or remain untreated (No Treatment). Treatment with Control Invasion Inducer demonstrated a significant increase in invasion of HT 1080 cells as compared to NIH-3T3 control cells.

155 S. Milpitas Blvd, Milpitas, CA 95035

T: 408-493-1800 F: 408-493-1801

Toll Free: 800-891-9699 (US Only)



The simplest, yet sensitive series of assays in the market!!!!

Cell Migration/Chemotaxis Assay Kits (Ex/Em= 530/590)				
	Plate Format	No. Assays	Coating	Cat. No.
No Coating	24-well	12	8	K909-12
	96-well	100		K906-100
	24-well	12	5	K910-12
	96-well	100		K910-100
	24-well	12	3	K911-12
	96-well	100		K908-100

Cell Invasion Assay Kits (Ex/Em= 530/590)				
	Plate Format	No. Assays	Coating	Cat. No.
Pore Size: 8 µm	24-well	12	ECM	K913-24
	96-well	100		K912-100
	24-well	12	Collagen I	K917-24
	96-well	100		K916-100
	24-well	12	Collagen IV	K919-24
	96-well	100		K918-100
	24-well	12	Laminin	K915-24
	96-well	100		K914-100

Cell Type	Cell Migration/Chemotaxis			Invasion
	3 µm	5 µm	8 µm	8 µm
Invasive and Non-invasive breast cancer cell lines (human): MDA-MB-231, MCF7	-	+	+	+
Invasive fibrosarcoma cell line (human): HT1080	-	+	+	+
Non-Invasive fibroblast cell line (mouse): NIH3T3	-	+	+	+
Endothelial cells: HUVEC	+	+	+	+
Endothelial cells: HMVEC/HMEC	-	+	+	+
Myofibroblast: Hepatic Stellate	-	+	-	N/A
Leukocytes, Neutrophils	+	-	-	-
Lymphocytes, Macrophages, Monocytes	-	+	-	-
Epithelial cell, fibroblasts	-	-	+	-

N/A: Information Not Available

Visit www.biovision.com for a comprehensive overview on these and other cell-based assay products!