

# ELISA Kits for Biomarkers

Biomarker generally refers to a measurable indicator of some biological state or condition. Many biomarkers have been well characterized and repeatedly shown to correctly predict relevant clinical outcomes without using other invasive diagnostic tools. BioVision offers accurate, fully validated, ready-to-use ELISA Kits for convenient and sensitive quantitation of a wide range of targets in various sample types. These ELISA kits included pre-coated plates with capture/detection antibodies, standards, and buffers and accessory reagents. Our stringent manufacturing and quality control standards allow us to offer the highest levels of performance and consistency with each ELISA kit you run.

## Key Features:

- **Accurate:** reproducible results with low intra & inter assay variability
- **High Sensitivity & Specificity**
- **Versatile:** broad range of sample types such as serum, plasma, tissue, cell culture supernatant, urine & many other biological fluids
- **Convenient:** No special handling or disposal required
- **Extremely Stable:** long shelf life, very low background

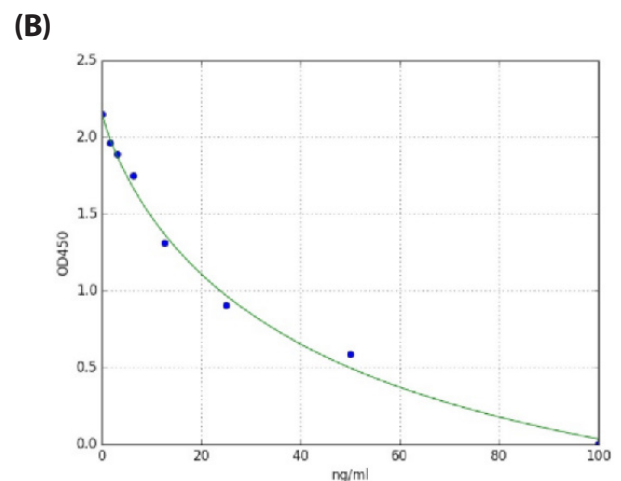
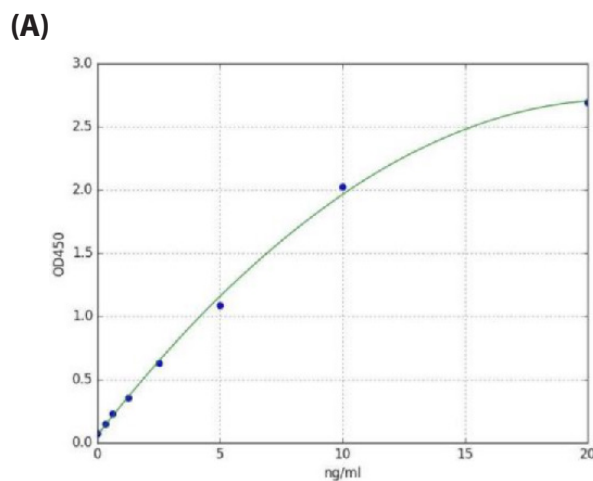


Figure: Standard curve for human Progesterone receptor ELISA Kits (K4270) (Left) and 8-OHdG ELISA Kits (K4160) (Right).

Target	Cat. No.	Specificity	Detection Range
AKT1/PKB (Human) ELISA Kit	K4166	Human	0.156 - 10 ng/ml
Alpha-Fetoprotein (AFP) ELISA	K4242	Human	5 - 500 ng/ml
ANA Screen (Antinuclear Antibody) ELISA Kit	E4708	Human	--
CA19-9 (human) ELISA Kit	K7427	Human	25 - 600 ng/ml
Cancer Antigen 125 (CA-125) (human) ELISA Kit	K4803	Human	0.6 - 400 U/ml
Carcinoembryonic Antigen (CEA) (Human) ELISA Kit	E4740	Human	0.63-40 ng/mL
Carcinoembryonic Antigen (CEA) (Mouse) ELISA Kit	E4741	Mouse	62.50-4000 pg/mL
Carcinoembryonic Antigen (CEA) (Rat) ELISA Kit	E4742	Rat	0.16-10 ng/mL
Chorionic Gonadotropin (hCG) (human) ELISA Kit	K7424	Human	10 - 250 mIU/ml
QuickDetect™ Clusterin/Apo-J (Human) ELISA Kit	K4430	Human	7.5 - 120 ng/ml

155 S. Milpitas Blvd, Milpitas, CA 95035

T: 408-493-1800 F: 408-493-1801

Toll Free: 800-891-9699 (US Only)



Target	Cat. No.	Specificity	Detection Range
C-Peptide ELISA Kit	E4701	Human	--
C-Reactive Protein (CRP) (Human) ELISA Kit	E4289	Human	31.2 - 2000 pg/ml
Creatinine (Human) ELISA Kit	E4368	Human	1.563 – 100 nmol/ml
Creatinine (Mouse) ELISA Kit	E4369	Mouse	1.25 – 80 nmol/ml
Creatinine (Rat) ELISA Kit	E4370	Rat	1.25 – 80 nmol/ml
Alpha Crosslaps (αCTx) (Human) ELISA Kit	E4797	Human	56.25 pg/mL
CTHRC1 (Human) ELISA Kit	E4811	Human	0.156-10 ng/ml
CTLA4 /CD152 (Human) ELISA Kit	K4157	Human	0.156 - 10 ng/ml
Cystatin C (CST3) (Human) ELISA Kit	E4304	Human	0.313 - 20 ng/ml
Cystatin C (CST3) (Porcine) ELISA Kit	E4306	Porcine	0.625 - 40 ng/ml
Cystatin C (CST3) (Rat) ELISA Kit	E4305	Rat	0.156 - 10 ng/ml
EGFR/ErbB1 (Human) ELISA Kit	K4168	Human	0.313 - 20 ng/ml
Estrogen Receptor (ERα) (Human) ELISA Kit	K4267	Human	62.5 - 4000 pg/ml
Estrogen Receptor beta (ERβ) (Human) ELISA Kit	K4268	Human	0.313 - 20 ng/ml
FGFR2 (Human) ELISA Kit	K4269	Human	31.2 - 2000 pg/ml
QuickDetect™ Free-PSA (Human) ELISA Kit	K4410	Human	62.5 - 1000 pg/ml
HER2/ErbB2 (Human) ELISA Kit	E4357	Human	0.312 - 20 ng/ml
8-hydroxy-2'-deoxyguanosine (8-OHdG) ELISA Kit	K4160	Universal	1.56 - 100 ng/ml
IL-10 (Human) ELISA Kit	K4167	Human	7.8 - 500 pg/ml
IL-3(Human) ELISA Kit	K4177	Human	15.6 - 1000 pg/ml
IL-4 (Human) ELISA Kit	K4164	Human	31.2 - 2000 pg/ml
IL-5 (Human) ELISA Kit	K4156	Human	4 - 250 pg/ml
IL-7 (Human) ELISA Kit	K4154	Human	7.81 - 500 pg/ml
IL-8 (Human) ELISA Kit	K4169	Human	31.2 - 2000 pg/ml
Lactoferrin (Human) ELISA Kit	E4726	Human	0.31-20 ng/ml
Lactoferrin (Mouse) ELISA Kit	E4727	Mouse	62.50 - 4000 pg/ml
Lactoferrin (Rat) ELISA Kit	E4728	Rat	31.25 - 2000 pg/mL
Lipocalin-2/NGAL (Human) ELISA Kit	E4313	Human	0.313 - 20 ng/ml
Lipocalin-2/NGAL (Mouse) ELISA Kit	E4585	Mouse	78.125 - 5000 pg/ml
Lipocalin-2/NGAL (Rat) ELISA Kit	E4586	Rat	62.5 - 4000 pg/ml
Lipoxin B4 ELISA Kit	E4795	All	0.31-20 ng/mL
Beta-2 Microglobulin (Human) ELISA Kit	E4879	Human	1.563 - 100 ng/ml
Neuron Specific Enolase ELISA Kit	E4703	Human	--
3-Nitrotyrosine ELISA Kit	K4158	Universal	1.56 - 100 ng/ml
Omentin (Human) ELISA Kit	E4880	Human	46.875 pg/ml
PD-1 (human) ELISA Kit	K4153	Human	0.156 - 10 ng/ml
PD-L1/CD274 (Human) ELISA Kit	K4155	Human	0.156 - 10 ng/ml
Pentosidine ELISA Kit	E4796	All	0.47 ng/mL
8-epi-PGF2α ELISA Kit	E4789	Universal	15.63—1000 pg/mL
Presepsin (Human) ELISA Kit	E4696	Human	0.156-10 ng/ml
Progesterone (human) ELISA Kit	K7414	Human	2.5 - 40 ng/ml
Progesterone ELISA Kit	K7416	Universal	15.62 - 500 pg/ml

Target	Cat. No.	Specificity	Detection Range
Progesterone receptor (PGR) (Human) ELISA Kit	K4270	Human	0.313 - 20 ng/ml
QuickDetect™ Proinsulin (Human) ELISA Kit	K4411	Human	15.6 - 1000 pg/ml
Prostate Specific Antigen (Free, human) ELISA Kit	K7432	Human	1 - 20 ng/ml
Prostate Specific Antigen (Total, human) ELISA Kit	K7431	Human	2 - 50 ng/ml
SCFR/c-Kit (Human) ELISA Kit	K4183	Human	0.781 - 50 ng/ml

Please visit [www.BioVision.com](http://www.BioVision.com) for a comprehensive overview on our products.