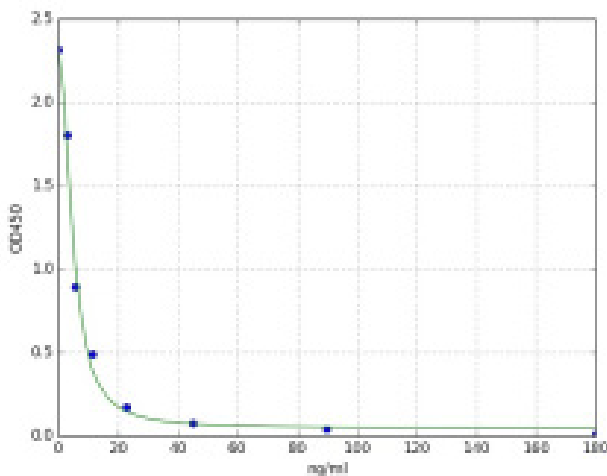


ELISA Kits for Growth Factors, Cytokines, and Hormones

Growth factors, cytokines, chemokines and hormones share many similarities and act as essential biochemical messengers for housekeeping functions, as well as, having crucial roles in pathological and stem-cell related growth and regulation. Each performs both homeostatic and stimulatory functions. They can be found within local tissues or universally in serum. BioVision has an extensive ELISA Kits collection when you are in search for hormone, cytokine and growth factors. It is one of the most cost-effective methods for detecting and quantifying all antigens in various samples with consistent results.

Key Features:

- **Rapid and Simple:** No expensive equipment required
- **Accuracy:** reproducible results with low intra & inter assay variability
- **High Sensitivity and Specificity**
- **Versatility:** broad range of sample types including tissue, serum, milk, egg & many other biological samples



Standard Curve for Corticosterone (CORT) ELISA Kit (K4222).
Detection Range: 78.12 - 5000 pg/ml

ELISA Kits for detecting Growth Factors, Cytokines, and Hormones

Product Name	Cat. No.	Sensitivity
QuickDetect™ Acetylcholine (ACh) (Human) ELISA Kit	E4452	0.5 pg/ml
QuickDetect™ Acetylcholine (ACh) (Mouse) ELISA Kit	E4453	0.5 pg/ml
QuickDetect™ Acetylcholine (ACh) (Rat) ELISA Kit	E4454	0.5 pg/ml
BioSim™ anti-Adalimumab II (Human) ELISA Kit	E4876	--
Adiponectin (human) ELISA Assay Kit	K4901	0.5 ng/ml
Adiponectin (mouse) Elisa Assay Kit	K4902	0.125 ng/ml
Adiponectin (rat) Elisa Assay Kit	K4903	0.375 ng/ml
ADMA ELISA Kit	E4521	9.375 ng/ml
Adrenaline/Epinephrine (EPI) ELISA Kit	E4359	4.688 pg/ml
Adrenocorticotrophic Hormone (ACTH) (human) ELISA Kit	K4003	--
AKR1C3 (Human) ELISA Kit	E4927	0.094 ng/ml
ALCAM/CD166 (Human) ELISA Kit	E5029	37.5 pg/ml

155 S. Milipitas Blvd, Milipitas, CA 95035

T: 408-493-1800 F: 408-493-1801

Toll Free: 800-891-9699 (US Only)



Product Name	Cat. No.	Sensitivity
Aldosterone ELISA Kit	E4342	4.97 pg/ml
Allopregnanolone ELISA Kit	E4346	129.7 pg/ml
ALOX15 (Human) ELISA Kit	E4985	37.5 pg/ml
alpha-Endorphin (Human) ELISA Kit	E4534	0.938 ng/ml
Androstenedione ELISA Kit	E4615	0.094 ng/ml
Angiotensin I (Human) ELISA Kit	E4515	75 pg/ml
Angiotensin II (Ang II) (Human) ELISA Kit	E4527	18.75 pg/ml
Angiotensin III (Ang III)(Human) ELISA Kit	E4536	46.875 pg/ml
ANGPTL3 (human) Serum ELISA Kit	K4914	0.155 ng/ml
ANGPTL3 (mouse/rat) Serum ELISA Kit	K4915	0.016 ng/ml
ANGPTL6 (human) Serum ELISA Kit	K4916	1.556 ng/ml
AREG (Human) ELISA Kit	E4894	2.813 pg/ml
Artrial Natruireitc Peptide (ANP) ELISA Kit	E4349	0.25 ng/ml
BDNF (human) ELISA Kit	K4788	80 pg/ml
QuickDetect™ beta-Endorphin (Human) ELISA Kit	E4458	0.5 pg/ml
QuickDetect™ beta-Endorphin (Mouse) ELISA Kit	E4459	0.01 pg/ml
QuickDetect™ beta-Endorphin (Rat) ELISA Kit	E4460	0.01 pg/ml
BioSim™ anti-Bevacizumab II (Human) ELISA Kit	E4874	--
CA19-9 (human) ELISA Kit	K7427	25 ng/ml
Calcitonin (Human) ELISA Kit	E4743	9.38 pg/mL
Calcitonin (Mouse) ELISA Kit	E4744	9.38 pg/mL
Calcitonin (Rat) ELISA Kit	E4745	9.38 pg/mL
BioSim™ anti-Canakinumab (Human) ELISA Kit	E4868	--
BioSim™ Canakinumab (Human) ELISA Kit	E4867	3 ng/ml
Carboxymethyl Lysine (CML) ELISA Kit	E4634	9.375 ng/ml
QuickDetect™ Catecholamine (CA) (Human) ELISA Kit	E4461	1 pg/ml
QuickDetect™ Catecholamine (CA) (Mouse) ELISA Kit	E4462	1.2 pg/ml
QuickDetect™ Catecholamine (CA) (Rat) ELISA Kit	E4463	1.2 pg/ml
QuickDetect™ CD14 (Human) ELISA Kit	K4415	0.01 ng/ml
CD47 (Human) ELISA Kit	E4318	9.375 ng/ml
BioSim™ anti-Cetuximab II (Human) ELISA Kit	E4873	--
Chorionic Gonadotropin (hCG) (human) ELISA Kit	K7424	0.5mIU/ml
Corticosterone (CORT) ELISA Kit	K4222	46.87 pg/ml
QuickDetect™ Corticosterone (Human) ELISA Kit	K4413	31.25 pg/ml
Cortisol (human/mouse/rat) ELISA Kit	K7430	1 ng/ml
Cortisol (Saliva) Human ELISA Kit	K7434	1 ng/m
Cortisol (Serum/Urine) ELISA Kit	E4849	2 ng/ml
CTGF (Human) ELISA Kit	E4837	37.50 pg/mL
CTGF (Mouse) ELISA Kit	E4838	0.10 ng/mL
CTGF (Rat) ELISA Kit	E4839	18.75 pg/mL
CXCL1 (Human) ELISA Kit	E5031	9.375 pg/ml
CXCL11 (Human) ELISA Kit	E5030	37.5 pg/ml
BioSim™ anti-Daratumumab (Human) ELISA Kit	E4924	--
Dehydroepiandrosterone (DHEA) ELISA Kit	E4636	0.094 ng/ml
11-Dehydrothromboxane B2 ELISA Kit	E4900	--
DHEA-S (human) ELISA Kit	K7428	0.1 µg/ml

Product Name	Cat. No.	Sensitivity
Dihydrotestosterone (DHT) ELISA Kit	E4604	23.438 pg/ml
Dopamine (DA) ELISA Kit	K4219	18.75 pg/ml
EGF (human) ELISA Kit	K4022	1 pg/ml
EGF (mouse) ELISA Kit	K4023	1 pg/ml
EGF (rat) ELISA Kit	K4024	1 pg/ml
Endothelin-1 ELISA Kit	K7429	0.4 pg/ml
Epiandrosterone ELISA Kit	E4852	0.120 ng/mL
Erythropoietin (Mouse) ELISA Kit	E4731	46.88 pg/ml
Erythropoietin (Rat) ELISA Kit	E4732	37.50 pg/mL
Erythropoietin ELISA Kit	E4720	0.94 mIU/ml
Estradiol (human) ELISA Kit	K3829	2 pmol/L
Estradiol (mouse) ELISA Kit	K3830	2 ng/ml
Estradiol (rat) ELISA Kit	K3831	2 ng/ml
Estriol (E3) ELISA Kit	E4627	1.875 ng/ml
Estrogen (Human) ELISA Kit	K4264	9.375 pg/ml
Estrogen (Mouse) ELISA Kit	K4265	9.375 pg/ml
Estrogen (Rat) ELISA Kit	K4266	9.375 pg/ml
Estrogen ELISA Kit	E4616	9.375 pg/ml
Estrone-3-Glucuronide (E1G) ELISA Kit	E4850	7.38 pg/mL
Ferritin (human) ELISA Kit	K7420	10 mg/ml
FGF1 (Human) ELISA Kit	E4281	18.75 pg/ml
FGF-21 (Human) ELISA Kit	E5011	18.75 pg/ml
BioSim™ anti-Filgrastim (Neupogen®) (Human) ELISA Kit	E4399	3 ng/ml
FNDC5 (Human) ELISA Kit	E4860	0.10 ng/mL
FNDC5 (Rat) ELISA Kit	E4862	62.50-4000 pg/mL
Follicle Stimulating Hormone [FSH] (human) ELISA Kit	K7425	5 mIU/ml
G1/S-specific cyclin-D1(CCND1) (Human) ELISA Kit	E4287	0.188 ng/ml
QuickDetect™ GABA (Human) ELISA Kit	E4455	1.2 pg/ml
QuickDetect™ GABA (Mouse) ELISA Kit	E4456	1.2 pg/ml
QuickDetect™ GABA (Rat) ELISA Kit	E4457	1.2 pg/ml
Galectin-3 (Human) ELISA Kit	E4883	0.094 ng/ml
QuickDetect™ GDNF (Human) ELISA Kit	E4443	6 pg/ml
GDNF (Human) ELISA Kit	K4184	18.75 pg/ml
GLP-1 (Human) ELISA Kit	K4162	0.188 ng/ml
GM-CSF (human) ELISA Kit	K4772	2 pg/ml
Growth Hormone (human) ELISA Kit	K7412	2.5 ng/ml
HB-EGF (Human) ELISA Kit	K4258	18.75 pg/ml
Hepcidin (human) ELISA Kit	E4692	18.75 pg/ml
Hepcidin (mouse) ELISA Kit	E4693	1.875 ng/ml
Hepcidin (Rat) ELISA Kit	E4694	9.375 pg/ml
5-Hydroxyindoleacetic Acid (5-HIAA) ELISA Kit	E4533	0.094 nmol/ml
4-Hydroxynonenal (4-HNE) ELISA Kit	E4645	18.75 pg/ml
17-Hydroxyprogesterone ELISA Kit	E4345	20.3 pg/ml
IFN-gamma (Human) ELISA Kit	E4825	9.38 pg/mL
IFN-gamma (Mouse) ELISA Kit	E4593	18.75 pg/ml
QuickDetect™ IGF-2 (Human) ELISA Kit	K4412	0.01 ng/ml

Product Name	Cat. No.	Sensitivity
IGFBP-3 (Human) ELISA Kit	E4884	0.234 ng/ml
IL-1 β (Human) ELISA Kit	E4818	4.69 pg/mL
IL-2 (Human) ELISA Kit	E4829	4.69 pg/mL
IL-2 (Mouse) ELISA Kit	E4830	9.38 pg/mL
IL-2 (Rat) ELISA Kit	E4831	18.75 pg/mL
IL-3(Human) ELISA Kit	K4177	9.4 pg/ml
IL-4 (Human) ELISA Kit	K4164	18.75 pg/ml
IL-5 (Human) ELISA Kit	K4156	3.906 pg/ml
IL-6 (human) ELISA Kit	K4143	4.69 pg/ml
QuickDetect™ IL-6 (Human) ELISA Kit	K4428	0.1 pg/ml
IL-6 (mouse) ELISA Kit	K4144	1 pg/ml
IL-6 (rat) ELISA Kit	K4145	62.5 pg/ml
IL-7 (Human) ELISA Kit	K4154	7.81 pg/ml
IL-8 (Human) ELISA Kit	K4169	18.75 pg/ml
IL-9 (Human) ELISA Kit	E4282	9.375 pg/ml
IL-10 (Human) ELISA Kit	K4167	4.69 pg/ml
IL-11 (Human) ELISA Kit	E4283	18.75 pg/ml
IL-13 (Human) ELISA Kit	E4284	9.375 pg/ml
QuickDetect™ IL-13 (Human) ELISA Kit	K4429	0.1 pg/ml
IL-15 (Human) ELISA Kit	E4832	9.38 pg/mL
IL-24 (Human) ELISA Kit	E4846	9.38 pg/mL
IL-24 (Mouse) ELISA Kit	E4847	18.75 pg/mL
QuickDetect™ INF-alpha (Human) ELISA Kit	E4450	0.3 pg/ml
Insulin (Mouse) ELISA Kit	K4271	46.9 pg/ml
IP-10/CXCL10 (Human) ELISA Kit	E4826	4.69 pg/mL
IP-10/CXCL10 (Mouse) ELISA Kit	E4827	18.75 pg/mL
IP-10/CXCL10 (Rat) ELISA Kit	E4828	18.75 pg/mL
Irisin Competitive ELISA Kit	K4761	1 ng/ml
QuickDetect™ Leptin (Human) ELISA Kit	E4449	12 pg/ml
Leptin (Human) ELISA Kit	E4653	18.75 pg/ml
Leptin (Mouse) ELISA Kit	E4654	37.5 pg/ml
Leptin (Rat) ELISA Kit	E4655	0.094 ng/ml
Luteinizing Hormone [LH] (human) ELISA Kit	K7426	5 mIU/ml
MCP-1 (Human) ELISA Kit	E4833	37.5 pg/mL
MCP-1 (Mouse) ELISA Kit	E4834	28.13 pg/mL
MCP-1 (Rat) ELISA Kit	E4835	0.10 ng/mL
MCP-3 (Human) ELISA Kit	E4836	9.38 pg/mL
M-CSF (Human) ELISA Kit	E5033	18.75 pg/ml
Melatonin ELISA Kit	E4630	4.688 pg/ml
2-Methoxyestradiol (2-ME2) ELISA Kit	E4635	15.6 ng/ml
MIF (Human) ELISA Kit	E5034	0.469 ng/ml
MR pro-ADM (Human) ELISA Kit	E4936	9.375 pmol/L
3-Nitrotyrosine ELISA Kit	K4158	--
Norepinephrine (NE) ELISA Kit	E4360	9.375 pg/ml
NTRK3 (Human) ELISA Kit	E5007	1.875 ng/ml
Omentin (Human) ELISA Kit	E4880	46.875 pg/ml

Product Name	Cat. No.	Sensitivity
Oncostatin-M (Human) ELISA Kit	E4881	9.375 pg/ml
Osteocalcin (Human) ELISA Kit	E4762	0.75 ng/ml
Osteocalcin (Mouse) ELISA Kit	E4763	0.23 ng/ml
Osteocalcin (Rat) ELISA Kit	E4764	0.47 ng/ml
Oxytocin ELISA Kit	E4348	17 pg/ml
PD-1 (human) ELISA Kit	K4153	0.094 ng/ml
Periostin/OSF-2 (human) ELISA Kit	K4760	15 pg/ml
Periostin/OSF-2 (mouse) ELISA Kit	K4762	10 pg/ml
PGFM ELISA Kit	E4853	20.8 pg/mL
PIK3CA (Human) ELISA Kit	K4259	0.094 ng/ml
Pregnanediol-3-Glucuronide (PDG) ELISA Kit	E4851	0.180 ng/m
Pregnenolone ELISA Kit	E4633	9.375 pg/ml
Progesterone (human) ELISA Kit	K7414	0.22 ng/ml
Progesterone ELISA Kit	K7416	8.57 pg/ml
QuickDetect™ Proinsulin (Human) ELISA Kit	K4411	15.6 pg/ml
ProInsulin (human) ELISA Kit	K7433	2.6 ng/ml
Prolactin (human) ELISA Kit	K4687	5 ng/ml
Prolactin (mouse/rat) ELISA Kit	K4688	3 ng/ml
Prostaglandin E2 (PGE2) ELISA Kit	E4637	18.75 pg/ml
Prostate Specific Antigen (Free, human) ELISA Kit	K7432	0.0144 ng/ml
Prostate Specific Antigen (Total, human) ELISA Kit	K7431	0.0144 ng/ml
QuickDetect™ VEGF (Human) ELISA Kit	K4425	0.8 pg/ml
BioSim™ anti-Ramucirumab (Human) ELISA Kit	E4870	--
BioSim™ Ranibizumab (Human) ELISA Kit	E4871	0.3 ng/ml
Ranibizumab (Lucentis®) (Human) ELISA Kit	E4312	7.8 ng/ml
Relaxin-2 (Human) ELISA Kit	E4824	4.69 pg/mL
BioSim™ anti-Secukinumab (Human) ELISA Kit	E5028	--
BioSim™ Secukinumab (Human) ELISA Kit	E5026	6.25 ng/ml
Serum, plasma and other biological fluids	E4861	37.50 pg/mL
Testosterone (human) ELISA Kit	K7417	0.2 ng/ml
Testosterone (mouse/rat) ELISA Kit	K7418	0.1 ng/ml
TGF-alpha (human) ELISA Kit	K4339	1 pg/ml
TGF beta-1 (Human) ELISA Kit	E4508	18.75 pg/ml
TGF beta-1 (Mouse) ELISA Kit	E4509	18.75 pg/ml
TGF beta-1 (Rat) ELISA Kit	E4510	18.75 pg/ml
TGF-beta1 (human) ELISA Kit	K4342	1 pg/ml
TGF-beta1 (mouse) ELISA Kit	K4343	2 pg/ml
TGF-beta1 (rat) ELISA Kit	K4344	1 pg/ml
Thrombopoietin (Human) ELISA Kit	E4721	18.75 pg/ML
Thrombopoietin (Mouse) ELISA Kit	E4733	4.69 pg/ml
Thrombopoietin (Rat) ELISA Kit	E4734	18.75 pg/ml
Thyroid Peroxidase [TPO] IgG (human) ELISA Kit	K5351	--
Thyroid Stimulating Hormone (human) ELISA Kit	K7411	0.05 µIU/ml
Thyroxine (T4) (human) ELISA Kit	K7413	2 ng/ml
Thyroxine (T4) (Mouse/Rat) ELISA Kit	K7421	0.467 µg/ml
TNF alpha (mouse) ELISA Kit	K1051	1 pg/ml

Product Name	Cat. No.	Sensitivity
TNF alpha (rat) ELISA Kit	K1052	1 pg/ml
TNF-alpha (Human) ELISA Kit	E4603	1 pg/ml
TRAIL/TNFSF10 (Human) ELISA Kit	K4262	9.375 pg/ml
Triiodothyronine (T3) (human) ELISA Kit	K7423	0.04 ng/ml
Triiodothyronine (T3) (Mouse/Rat) ELISA Kit	K7422	0.186 ng/ml
BioSim™ anti-Ustekinumab (Human) ELISA Kit	E4872	--
Vasopressin ELISA Kit	E4504	46.87 pg/ml
VCAM-1 (human) ELISA Kit	K7211	10 pg/ml
VCAM-1 (mouse) ELISA Kit	K7212	10 pg/ml
VEGF (human) ELISA Kit	K5363	1 pg/ml
VEGF (mouse) ELISA Kit	K5364	2 pg/ml
VEGF (rat) ELISA Kit	K5365	1 pg/ml
QuickDetect™ VEGFR (Human) ELISA Kit	K4426	0.01 ng/ml
Visfatin (human) Elisa Assay Kit	K4907	0.125 ng/ml

Please visit www.BioVision.com for a full list of Sensitive ELISA Kits for Growth Factors, Cytokines, and Hormones.