

ELISA Kits for Neuroscience

Neuroscience is the scientific study of the nervous system which controls movement and sensory. With the increasing population of patients suffering neurological diseases such as Alzheimer's and Parkinson's disease, numerous research resource has been devoted to understand the cellular and molecular mechanism within the system. BioVision offers an extensive collection of ELISA Kits for sensitive quantification of cytokines and other proteins involved in neuroscience research.

Key Features:

- **Rapid & Simple:** No expensive equipment or special handling/disposal required.
- **Accuracy:** reproducible results with low intra & inter assay variability
- **High Sensitivity & Specificity**
- **Versatility:** broad range of sample types including serum, plasma, tissue homogenates and many other biological fluids.

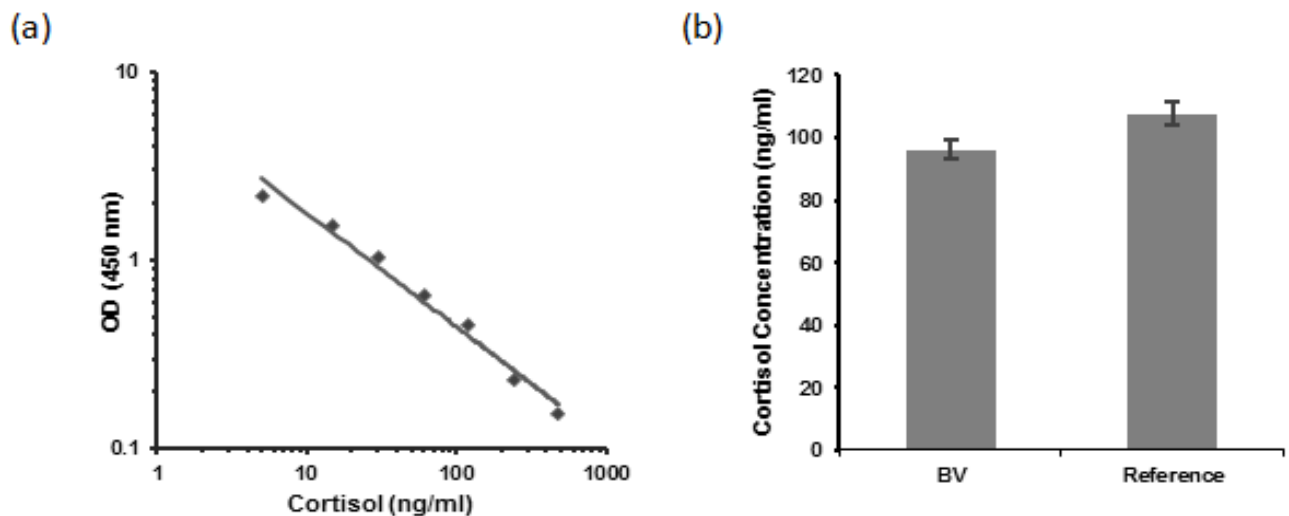


Figure: Validation images for Cortisol ELISA Kit (Cat. No. K7430) **a)** Standard Curve. A standard curve must be run with each assay. **b)** Measurement of Cortisol concentration in human serum. Sample of pooled human serum (20 μ l) was analyzed following the kit protocol (left) and compared to the literature values (right).

Find more BioVision's ELISA kits for your neuroscience research

Target	Cat. No.	Specificity	Detection Range
Acetylcholine (ACh) (Human) ELISA Kit	E4452	Human	3 - 160 pg/ml
QuickDetect™ Acetylcholine (ACh) (Mouse) ELISA Kit	E4453	Mouse	2.4 - 140 pg/ml
QuickDetect™ Acetylcholine (ACh) (Rat) ELISA Kit	E4454	Rat	3 - 140 pg/ml
Adrenaline/Epinephrine (EPI) ELISA Kit	E4359	Universal	7.813 - 500 pg/ml
AKR1C3 (Human) ELISA Kit	E4927	Human	0.156 - 10 ng/ml
Allopregnanolone ELISA Kit	E4346	Universal	10000 - 156.25 pg/ml
Alpha 1-Antichymotrypsin ELISA Kit	E4702	Human	--
Alpha-2-macroglobulin (Human) ELISA Kit	E5035	Human	78.125-5000 ng/m
alpha-Endorphin (Human) ELISA Kit	E4534	Human	1.563 - 100 ng/ml

155 S. Milpitas Blvd, Milpitas, CA 95035

T: 408-493-1800 F: 408-493-1801

Toll Free: 800-891-9699 (US Only)



Target	Cat. No.	Specificity	Detection Range
alpha-Synuclein (SNCA) (Human) ELISA Kit	K4261	Human	15.6 - 1000 pg/ml
Amyloid Beta 42 (Human) ELISA Kit	E4288	Human	15.62 - 1000 pg/ml
Apolipoprotein E4/Pan-ApoE	K4699	Human	78.12 - 5000 pg/ml
ARNTL (Human) ELISA Kit	E4990	Human	15.625 - 1000 pg/ml
Aspartate Aminotransferase (AST) (Human) ELISA Kit	E4319	Human	0.313 - 20 ng/ml
Aspartate Aminotransferase (AST) (Mouse) ELISA Kit	E4320	Mouse	0.313 - 20 ng/ml
Aspartate Aminotransferase (AST) (Rat) ELISA Kit	E4321	Rat	0.313 - 20 ng/ml
QuickDetect™ beta-Endorphin (Human) ELISA Kit	E4458	Human	3 - 200 pg/ml
QuickDetect™ beta-Endorphin (Mouse) ELISA Kit	E4459	Mouse	0.1 - 10 pg/ml
QuickDetect™ beta-Endorphin (Rat) ELISA Kit	E4460	Rat	0.1 - 10 pg/ml
Caffeine ELISA Kit	E4558	Universal	0.33 - 27 ng/ml
Calmodulin (CALM1) (Human) ELISA Kit	E4322	Human	93.75 - 6000 pg/ml
QuickDetect™ Catecholamine (CA) (Human) ELISA Kit	E4461	Human	5 - 280 pg/ml
QuickDetect™ Catecholamine (CA) (Mouse) ELISA Kit	E4462	Mouse	5 - 320 pg/ml
QuickDetect™ Catecholamine (CA) (Rat) ELISA Kit	E4463	Rat	5 - 320 pg/ml
CD47 (Human) ELISA Kit	E4318	Human	15.625 - 1000 ng/ml
Chromogranin A (CgA)	K4241	Human	20 - 1200 ng/ml
c-jun (Human) ELISA Kit	K4198	Human	0.781 - 50 ng/ml
CNR1 (Human) ELISA Kit	E4950	Human	0.156 - 10 ng/ml
Complement C3 (Human) ELISA Kit	E4976	Human	7.813 - 500 ng/ml
Corticosterone (CORT)	K4222	Human	78.12 - 5000 pg/ml
Cortisol (human/mouse/rat) ELISA Kit	K7430	Human, mouse, rat	5 - 480 ng/ml
Cortisol (Saliva) Human ELISA Kit	K7434	Human	1 - 100 ng/ml
Creatine Kinase MB (CK-MB)	E4606	Human	0.156 - 10 ng/ml
Creatine Kinase MB (CK-MB)	E4607	Mouse	78.125 - 5000 pg/ml
Creatine Kinase MB (CK-MB)	E4608	Rat	31.25 - 2000 pg/ml
CRY1 (Human) ELISA Kit	E4994	Human	0.313 - 20 ng/ml
CXCL11 (Human) ELISA Kit	E5030	Human	62.5-4000 pg/ml
Cystatin C (CST3) (Human) ELISA Kit	E4304	Human	0.313 - 20 ng/ml
Cystatin C (CST3) (Rat) ELISA Kit	E4305	Rat	0.156 - 10 ng/ml
Cystatin C (CST3) (Porcine) (Human) ELISA Kit	E4306	Porcine	0.625 - 40 ng/ml
DLL4 (Human) ELISA Kit	E5022	Human	78.125 - 5000 pg/ml
DNMT1 (Human) ELISA Kit	K4195	Human	0.156 - 10 ng /ml
Dopamine (DA) ELISA Kit	K4219	Universal	31.25 - 2000 pg/ml
Fetuin A (Human) ELISA Kit	E5041	Human	0.781-50 ng/ml
FGFR2 (Human) ELISA Kit	K4269	Human	31.25 - 2000 pg/ml
Folic Acid ELISA Kit	E4523	Universal	2 - 250 ng/ml
QuickDetect™ GABA (Human) ELISA Kit	E4455	Human	6 - 400 pg/ml
QuickDetect™ GABA (Mouse) ELISA Kit	E4456	Mouse	6 -400 pg/ml
QuickDetect™ GABA (Rat) ELISA Kit	E4457	Rat	6 -400 pg/ml
GAD1 (Human) ELISA Kit	E4962	Human	1.563 - 100 ng/ml
Galactose-Deficient IgA1 (Human) ELISA Kit	E5019	Human	14.06 - 900 ng/ml
GARS (Human) ELISA Kit	K4220	Human	0.313 - 20 ng/ml
QuickDetect™ GDNF (Human) ELISA Kit	E4443	Human	30 - 2000 pg/ml
GDNF (Human) ELISA Kit	K4184	Human	31.25 - 2000 pg/ml

Target	Cat. No.	Specificity	Detection Range
GLP1R (Human) ELISA Kit	E4996	Human	0.156 – 10 ng/ml
Heme Oxygenase 1 (HO1)	E4507	Human	0.313 - 20 ng/ml
Heme Oxygenase 1 (HO1)	E4524	Mouse	15.625 - 1000 pg/ml
Heme Oxygenase 1 (HO1)	E4525	Rat	0.156 - 10 ng/ml
Histamine (HIS)	K4163	Universal	0.781 -50 ng/ml
Homocysteine ELISA Kit	E4543	Universal	7.813 - 500 pmol/ml
HSPA5 (Human) ELISA Kit	E5000	Human	0.625 – 40 ng/ml
HSPB1 (Human) ELISA Kit	E4984	Human	0.781 – 50 ng/ml
5-Hydroxyindoleacetic Acid (5-HIAA)	E4533	Universal	1.563 - 100 ng/ml
IL-33 (Human) ELISA Kit	E4888	Human	15.625 - 1000 pg/ml
Kynurenine (KYN)	E4629	Universal	7.8 - 500 pmol/ml
LIFR (Human) ELISA Kit	K4203	Human	0.625 - 40 ng/ml
LRRK2 (Human) ELISA Kit	K4228	Human	0.156 - 10 ng/ml
MBP (Human) ELISA Kit	E4974	Human	0.156 – 10 ng/ml
Metanephrine ELISA Kit	E4768	Universal	0.16-10 ng/ml
MFN2 (Human) ELISA Kit	E4972	Human	31.25 – 2000 pg/ml
MGMT (Human) ELISA Kit	K4196	Human	0.156 - 10 ng /ml
MOG (Human) ELISA Kit	E4963	Human	0.156 – 10 ng/ml
NCAM-1/CD56 (Human) ELISA Kit	E5039	Human	78.125-5000 pg/ml
Neopterin (Human) ELISA Kit	E4928	Human	0.156 - 10 ng/ml
Nepriylsin (Human) ELISA Kit	E4882	Human	0.156 - 10 ng/ml
Nestin (Human) ELISA Kit	K4191	Human	15.6 -1000 pg/ml
Neuregulin-1/NRG1-beta1	K4711	Human	62.5 - 4000 pg/ml
NLRP3 (Human) ELISA Kit	E4890	Human	0.781 - 50 ng/m
Norepinephrine (NE)	E4360	Human	7.813 - 500 pg/ml
NPY (Human) ELISA Kit	E5017	Human	15.625 – 1000 pg/ml
NQO1 (human intracellular) ELISA Kit	K4926	Human	0.313 - 20 ng/ml
NRP-1 (Human) ELISA Kit	E4938	Human	78.125 - 5000 pg/ml
NRXN1 (Human) ELISA Kit	E4952	Human	78.125 – 5000 pg/ml
NTRK3 (Human) ELISA Kit	E5007	Human	3.13 – 200 ng/ml
Osteopontin (OPN) (Human) ELISA Kit	E4920	Human	0.156 - 10 ng/ml
Oxytocin ELISA Kit	E4348	Universal	300 - 3600 pg/ml
PER1 (Human) ELISA Kit	E4989	Human	15.625 – 1000 pg/ml
PER2 (Human) ELISA Kit	E4991	Human	0.313 – 20 ng/ml
PPARG (Human) ELISA Kit	E4992	Human	0.156 – 10 ng/ml
PTEN (Human) ELISA Kit	K4193	Human	0.156 - 10 ng /ml
RORC (Human) ELISA Kit	E4993	Human	0.156 – 10 ng/ml
Serotonin ELISA Kit	E4294	Universal	15.625 - 1000 ng/ml
SHP2 (Human) ELISA Kit	E4930	Human	0.313 - 20 ng/ml
QuickDetect™ 24(S)-Hydroxycholesterol	K4434	Human	0.5 -100 ng/ml
Sirtuin 1 (human intracellular) ELISA Kit	K4923	Human	0.031 - 2 ng/ml
Sirtuin 2 (human intracellular) ELISA Kit	K4924	Human	0.125 - 8 ng/ml
SOX2 (Human) ELISA Kit	K4199	Human	0.156 - 10 ng/ml
Sphingosine-1-Phosphate (Human) ELISA Kit	E4929	Human	3.125 - 200 ng/ml
sRAGE (Human) ELISA Kit	E5014	Human	31.25 – 2000 pg/ml

Target	Cat. No.	Specificity	Detection Range
Tau / MAPT (Human) ELISA Kit	K4263	Human	7.8 - 500 pg/ml
TFR (Human) ELISA Kit	K4185	Human	1.56 - 100 ng/ml
TIMELESS (Human) ELISA Kit	E5016	Human	0.156 – 10 ng/ml
Tissue Transglutaminase (tTG)	E4501	Human	0.156 - 10 ng/ml
TREM2 (Human) ELISA Kit	E4973	Human	78.125 – 5000 pg/ml
TRPA1 (Human) ELISA Kit	E5010	Human	0.156 – 10 ng/ml
TSPO (Human) ELISA Kit	E5015	Human	0.156 – 10 ng/ml
Vancomycin ELISA Kit	E4605	Universal	12.8 - 1000 ng/ml
Vanillylmandelic Acid ELISA Kit	E4752	Universal	1.56—100 ng/ml
Vasopressin	E4504	Universal	78.12 - 5000 pg/ml

Please visit www.BioVision.com for a comprehensive overview on our products!