

ELISA Kits for Food Toxicity



Food contamination with biological and environmental pollutants occurs through several stages of production and processing. The rapidly growing use of new food additives, as well as innovation in food contact substance development, has increased the need to explore the use of chemical toxicity testing approaches for food safety. BioVision offers ELISA Kits for the detection of these toxins in various food samples. These ELISA Kits are based on the competitive ELISA principle and it is an easy, fast and sensitive method to detect the toxins in a wide variety of food samples.

Key Features:

- **Rapid & Simple:** No expensive equipment or special handling/disposal required
- **Accuracy:** reproducible results with low intra & inter assay variability
- **High Sensitivity & Specificity**
- **Versatility:** broad range of sample types including milk, meat, corn, grain, peanut, rice, soy, etc

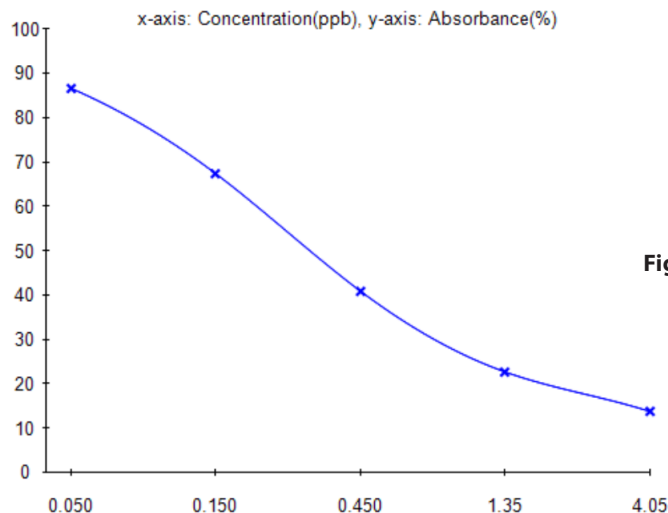


Figure: Typical Standard Curve for Ractopamine ELISA Kit (Cat. No.E4565).

ELISA Kits

Product Name	Cat. No.	Specificity	Detection Range	Size
Aflatoxin B1 (AFB1) ELISA Kit	K4208	Universal	0.05 - 4.05 ppb	100 assays
Aflatoxin M1 ELISA Kit	E4566	Universal	0.02 - 1.62 ppb	100 assays
Amantadine ELISA Kit	E4940	Universal	0.5 - 40.5ppb	96 assays
Amoxicillin ELISA Kit	E4614	Universal	1 - 27 ppb	100 assays

155 S. Milpitas Blvd, Milpitas, CA 95035
 T: 408-493-1800 F: 408-493-1801
 Toll Free: 800-891-9699 (US Only)



ELISA Kits

Product Name	Cat. No.	Specificity	Detection Range	Size
Ampicillin ELISA Kit	E4350	Universal	1 - 625 ppb (ng/ml)	100 assays
Avermectin ELISA Kit	E4944	Chicken, Pork, Duck	--	96 assays
Azithromycin ELISA Kit	E4945	Chicken, Duck	--	96 assays
Bisphenol A ELISA Kit	E4722	Human	0.4- 30 ppb	96 assays
Caffeine ELISA Kit	E4558	Universal	0.33 – 27 ng/ml	100 assays
Chloramphenicol (CAP) ELISA Kit	K4230	Universal	0.05 - 4.05 ppb	100 assays
Chlorpromazine ELISA Kit	E4956	Universal	--	96 assays
Chlortetracycline ELISA Kit	E4782	Universal	Tissue, Liver, Eggs - 0.8 ppb, Honey - 4 ppb, Urine -1 ppb	96 assays
CHO Host Cell Proteins Elisa kit	E4537	Universal	0.1 - 100 ng/ml	100 assays
Cimaterol ELISA Kit	E4771	Universal	--	100 assays
Ciprofloxacin (Cipro) ELISA Kit	E4365	Universal	0.1 – 8.1 ppb (ng/ml)	100 assays
Clenbuterol ELISA Kit	E4564	Universal	0.05 – 4.05 ppb (ng/ml)	100 assays
Colistin ELISA Kit	E4946	Universal	--	96 assays
Deoxynivalenol ELISA Kit	E4750	Universal	--	100 assays
Dexamethasone ELISA Kit	E4942	Universal	0.2ppb for muscle tissue; 0.5ppb for milk; 1ppb for feed	96 assays
Diazepam ELISA Kit	E4772	Universal	--	100 assays
Diethylstilbestrol (DES) ELISA Kit	E4278	Universal	0.02 – 1.62 ppb (ng/ml)	100 assays
Doramectin ELISA Kit	E4958	Universal	--	96 assays
Doxycycline ELISA Kit	E4613	Universal	0.1 – 8.1 ppb	100 assays
DYKDDDDK-Tag Protein ELISA Kit	E4700	Mammalian, Bacteria	256 – 10,000 ng/ml	96 assays
Enrofloxacin (ENR) ELISA Kit	E4277	Universal	0.1 - 8.1 ppb	100 assays
Erythromycin ELISA Kit	E4955	Universal		96 assays
Florfenicol ELISA Kit	E4780	Universal	0.15 ppb (ng/mL)	96 assays
Fluoroquinolones ELISA Kit	K4205	Universal	0.3 - 24.3 ppb	100 assays
Fumonisin B1 ELISA Kit	E4749	Universal	--	100 assays
Furazolidone ELISA Kit	K4231	Universal	0.02 - 1.62 ppb	100 assays
Gentamicin (serum/urine) ELISA Kit	K4315	Universal	0.3 - 24.3 ppb	100 assays
Gentamicin ELISA Kit	K4206	Universal	0.3 - 24.3 ppb	100 assays
GST Tag ELISA Kit	E4690	E.	45 - 1440 ng/ml	96 assays
His-tag Protein ELISA kit	E4550	Universal	25.6 – 3200 ng/ml	100 assays
Kanamycin ELISA Kit	K4210	Universal	0.5 - 40.5 ppb	100 assays
β-lactamase (Human) ELISA Kit	E4347	Human	1.25 ng/ml – 40 ng/ml	100 assays
Lincomycin ELISA Kit	E4612	Universal	0.1 – 8.1 ppb	100 assays
Malachite Green ELISA Kit	E4941	Universal	0.1ppb for tissue (muscle) samples	96 assays
Melamine ELISA Kit	E4274	Universal	1- 81 ppb	100 assays
Metronidazole ELISA Kit	E4948	Universal	--	96 assays
Neomycin ELISA Kit	E4611	Universal	0.1 – 8.1 ppb	100 assays
Nitrofurantoin (AHD) ELISA Kit	E4275	Universal	0.05 - 4.05 ppb	100 assays

ELISA Kits

Product Name	Cat. No.	Specificity	Detection Range	Size
Ochratoxin A (OTA) ELISA Kit	E4746	Universal	--	100 assays
Olaquinox ELISA Kit	E4781	Universal	1.5 ppb , Feed---150 ppb	96 assays
Ovalbumin (OVA) (Human) ELISA Kit	E4358	Human	0.781 – 50 ng/ml	100 assays
Oxytetracycline ELISA Kit	E4957	Universal	--	96 assays
Phenylethanolamine A ELISA Kit	E4751	Universal	0.1 ppb (ng/mL)	96 assays
QuickDetect™ BSA ELISA Kit	E4466	Human	6.25 - 400 ng/ml	100 assays
QuickDetect™ E. Coli Protein (Human) ELISA Kit	E4451	Human	1.5 ng/mL - 160 ng/mL	100 assays
Quinolone ELISA Kit	E4530	Universal	0.12 - 10 ppb	100 assays
Ractopamine ELISA Kit	E4565	Universal	0.05 – 4.05 ppb (ng/ml)	100 assays
Ribavirin ELISA Kit	E4949	Universal	--	96 assays
Salbutamol (SALB) ELISA Kit	K4209	Universal	0.1 ppb - 8.1 ppb	100 assays
Sarafloxacin ELISA Kit	E4777	Universal	0.1 ppb (ng/mL)	96 assays
Spectinomycin ELISA Kit	E4959	Universal	--	96 assays
Streptomycin ELISA Kit	E4272	Universal	0.1 - 8.1 ppb	100 assays
Sudan ELISA Kit	E4769	Universal	--	100 assays
Sulfamethazine ELISA Kit	E4778	Universal	0.5 ppb (ng/mL)	96 assays
Sulfamethoxazole ELISA Kit	E4770	Universal	--	100 assays
Sulfametoxydiazine ELISA Kit	E4775	Universal	--	100 assays
Sulfamonomethoxine ELISA Kit	E4774	--	--	100 assays
Sulfaquinoxaline ELISA Kit	E4773	Universal	--	100 assays
Sulfonamides residue ELISA Kit	K4207	Universal	1 - 81 ppb	100 assays
T-2 Toxin ELISA Kit	E4748	Universal	--	100 assays
Tetracyclines ELISA Kit	E4273	Universal	0.5 – 40 ppb (ng/ml)	100 assays
Tilmicosin ELISA Kit	E4943	Universal	--	96 assays
Total Aflatoxin ELISA Kit	E4747	Universal	--	100 assays
Tylosin ELISA Kit	E4779	Universal	- 1 ppb, Honey- 0.5 ppb	96 assays
Vancomycin ELISA Kit	E4605	Universal	12.8 - 1000 ppb (ng/ml)	100 assays
BioSim™ anti-VEGF-A (Human) ELISA Kit	E4312	Human	1.22 – 625 ng/ml	100 assays
Zearalenone (ZEN) ELISA Kit	E4276	Universal	0.3 - 24.3 ppb	100 assays

Please visit www.BioVision.com for a comprehensive overview on our products!