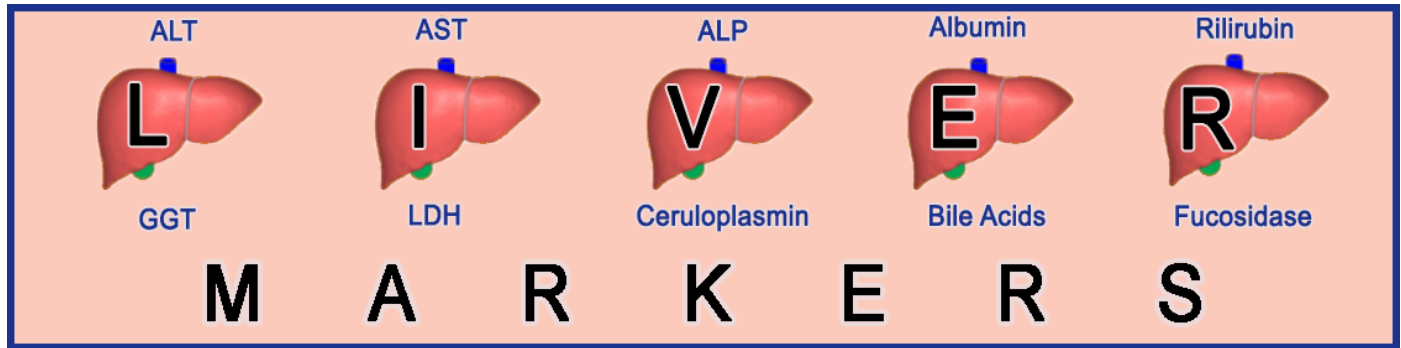


Hepatic Markers



Numerous hepatic biomarkers, such as LDH, have been validated to diagnose physiological and pathological conditions. BioVision offers one of the most comprehensive series of research kits utilized for the study of hepatic markers. Our products have been validated with human serum, plasma, urine, and cell/tissue lysates.

Key Features:

- **Non-radioactive, versatile assays** (Microplate)
- **Specific**, homogeneous assay
- **Sensitive**: colorimetric/fluorometric format
- **Convenient**: minimal sample preparation, fast protocols (< 2 hours)
- **Cost effective**: 100 assays; High Throughput Screening (HTS) compatible
- **Adaptable**: works with most of the commonly available instrumentations

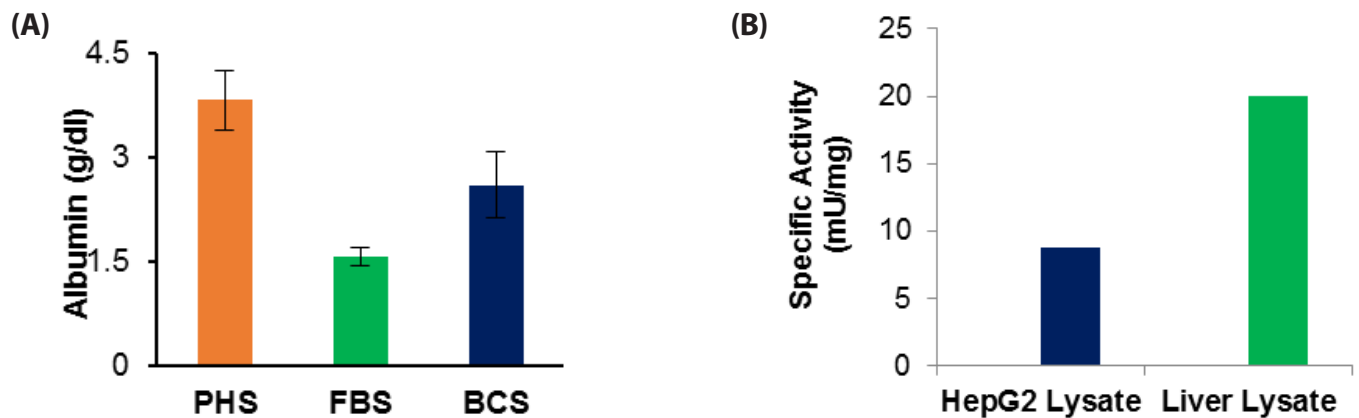


Figure: (A). Albumin concentration in pooled human serum (PHS), fetal bovine serum (FBS), and Bovine calf serum using **K554**. **(B).** Measurement of Alanine aminotransferase activity in HepG2 cells and liver lysate using **K752**.

Product Name	Cat. No.	Marker	Sample Application
Alanine Aminotransferase (ALT or SGPT) Activity Assay Kit (C/F)	K752	Liver Damage	Serum, cell/tissue lysate
Albumin (Albuminuria) Assay Kit (F)	K550	Liver Damage	Urine, saliva
Albumin (BCG) Assay Kit (C)	K554	Liver Damage	Serum
Albumin-to-Creatinine Ratio (ACR) Assay Kit	K551	Liver Disease	Urine
Alkaline Phosphatase Activity Assay Kit (C)	K412	Liver Damage	Serum, plasma, cell lysate
Alkaline Phosphatase Activity Assay Kit (F)	K422	Liver Damage	Serum, plasma, urine

* C: Colorimetric; F: Fluorometric

155 S. Milpitas Blvd, Milpitas, CA 95035
 T: 408-493-1800 F: 408-493-1801
 Toll Free: 800-891-9699 (US Only)

BioVision
 BioVision Incorporated



Product Name	Cat. No.	Marker	Sample Application
Ammonia Assay Kit (C)	K370	Cirrhosis/Hepatitis	Cell/tissue lysate
Ammonia Assay Kit II (C)	K470	Cirrhosis/Hepatitis	Cell/tissue lysate
Aspartate Aminotransferase (AST or SGOT) Activity Assay Kit (C)	K753	Liver Disease	Serum, tissue lysate
Bilirubin (Total and Direct) Assay Kit (C)	K553	Jaundice/Anemia	Serum
Ceruloplasmin Activity Assay Kit (C)	K669	Jaundice	Serum
Gamma Glutamyl Transferase (GGT) Activity Assay Kit (C)	K784	Bile Duct Damage	Serum, cell/tissue lysate
Gamma Glutamyl Transferase (GGT) Activity Assay Kit (F)	K785	Bile Duct Damage	Serum, cell/tissue lysate
EZScreen™ Glucose Assay Kit (384 Well) (C)	K950	Diabetes	Serum, plasma, others
Glucose Assay Kit (C/F)	K606	Diabetes	Serum, plasma, urine
Glucose Assay Kit II (C)	K686	Diabetes	Serum, plasma, others
Lactate Dehydrogenase (C)	K726	Liver Damage	Cell/tissue lysate
Lactate Dehydrogenase (F)	K730	Liver Damage	Serum, plasma, muscle
α -L-Fucosidase (FUCA1) Assay Kit (C)	K224	Hepatic carcinoma	Serum, plasma, others
α -L-Fucosidase Activity Assay Kit (F)	K542	Hepatic carcinoma	Serum, plasma, others
Non-Alcoholic Fatty Liver Disease (NAFLD)	K489	Fatty Liver	Serum, tissue lysate
5'-Nucleotidase (CD73) Activity Assay Kit (C)	K992	Cirrhosis/Hepatitis	Cell/tissue lysate
Sorbitol Dehydrogenase Activity Assay Kit (C)	K935	N/A	Animal tissues, cell culture
Total Bile Acids (TBA) Assay Kit (C)	K209	N/A	Serum, plasma, bile, urine

* C: Colorimetric; F: Fluorometric

Please visit www.BioVision.com to see the full range of Metabolism Assays from BioVision and check out our flyers.